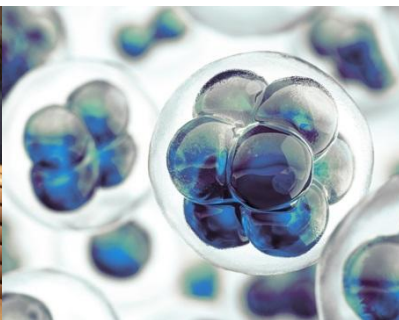




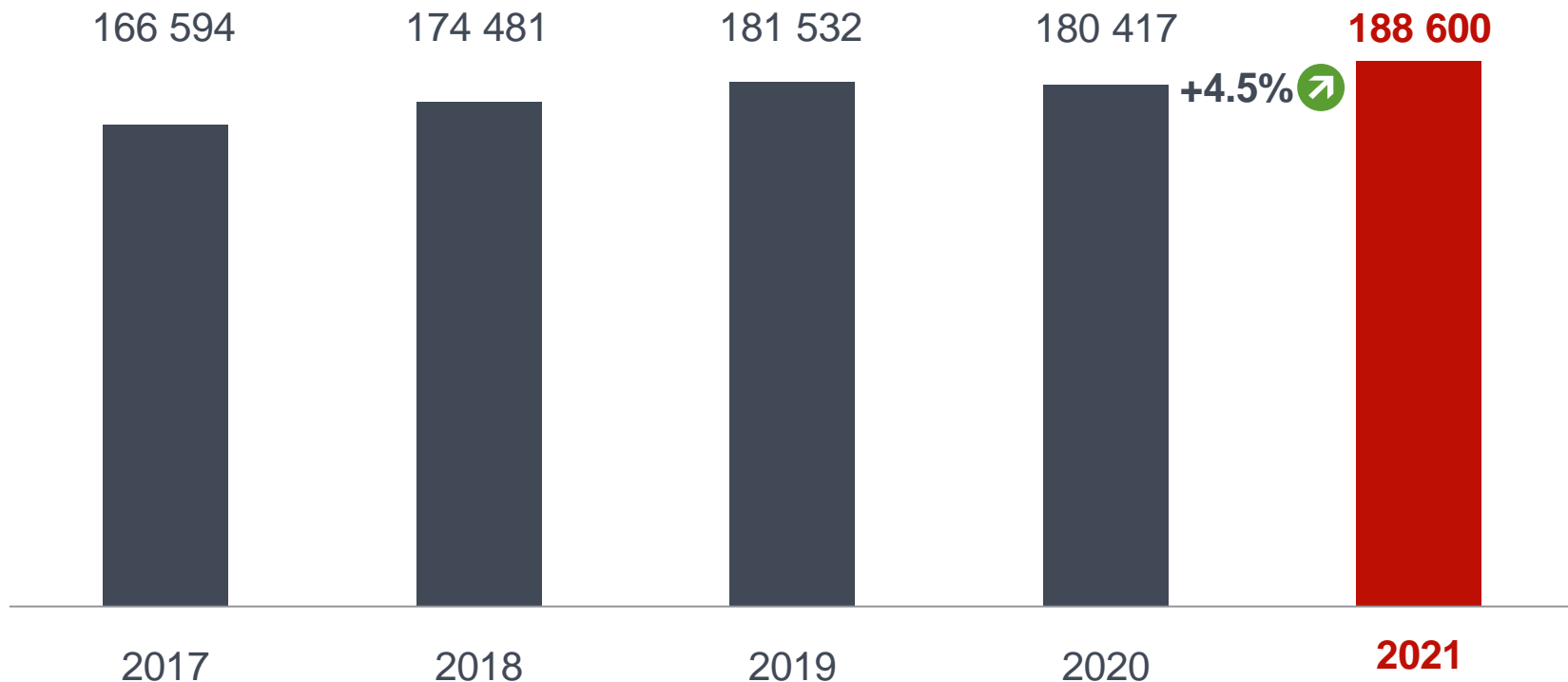
Europäisches
Patentamt
European
Patent Office
Office européen
des brevets

European Patent Office Patent Index 2021

Country profile: Spain



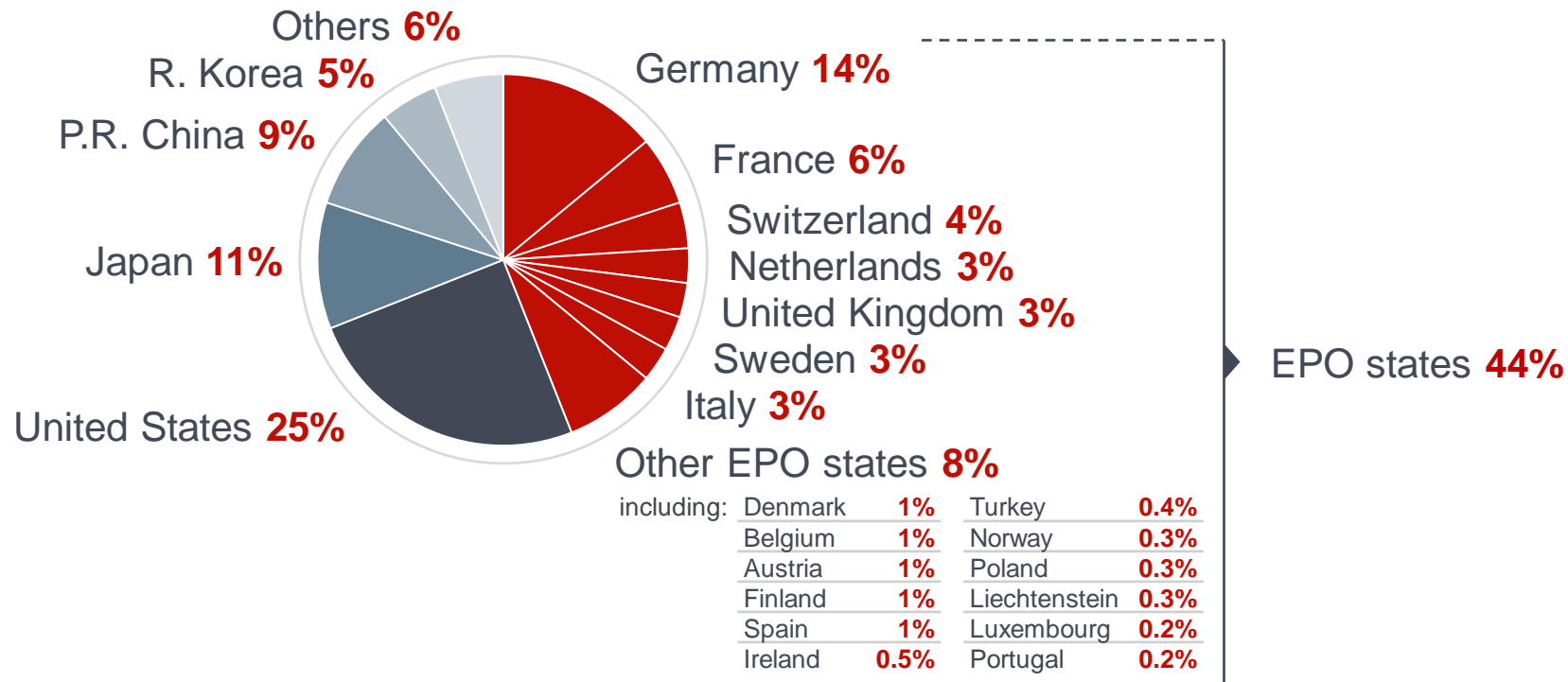
Growth of European patent applications¹ – global



Source: EPO. Status: 24.01.2022.

¹ European patent applications include direct European applications and international (PCT) applications that entered the European phase during the reporting period.

Origin of European patent applications¹ in 2021



Source: EPO. Status: 24.01.2022.

¹ European patent applications include direct European applications and international (PCT) applications that entered the European phase during the reporting period. The geographic origin is based on the country of residence of the first applicant listed on the application form (first-named applicant principle).
Note: Sums may vary slightly due to rounding.

Top countries for European patent applications¹

TOP40

	2021	Change
1 United States	46 533	5.2%
2 Germany	25 969	0.3%
3 Japan	21 681	-1.2%
4 P.R. China	16 665	24.0%
5 France	10 537	-0.7%
6 R. Korea	9 394	3.4%
7 Switzerland	8 442	3.9%
8 Netherlands	6 581	3.1%
9 United Kingdom	5 627	-1.2%
10 Sweden	4 954	12.0%
11 Italy	4 919	6.5%
12 Denmark	2 642	9.2%
13 Belgium	2 485	3.3%
14 Austria	2 317	0.5%

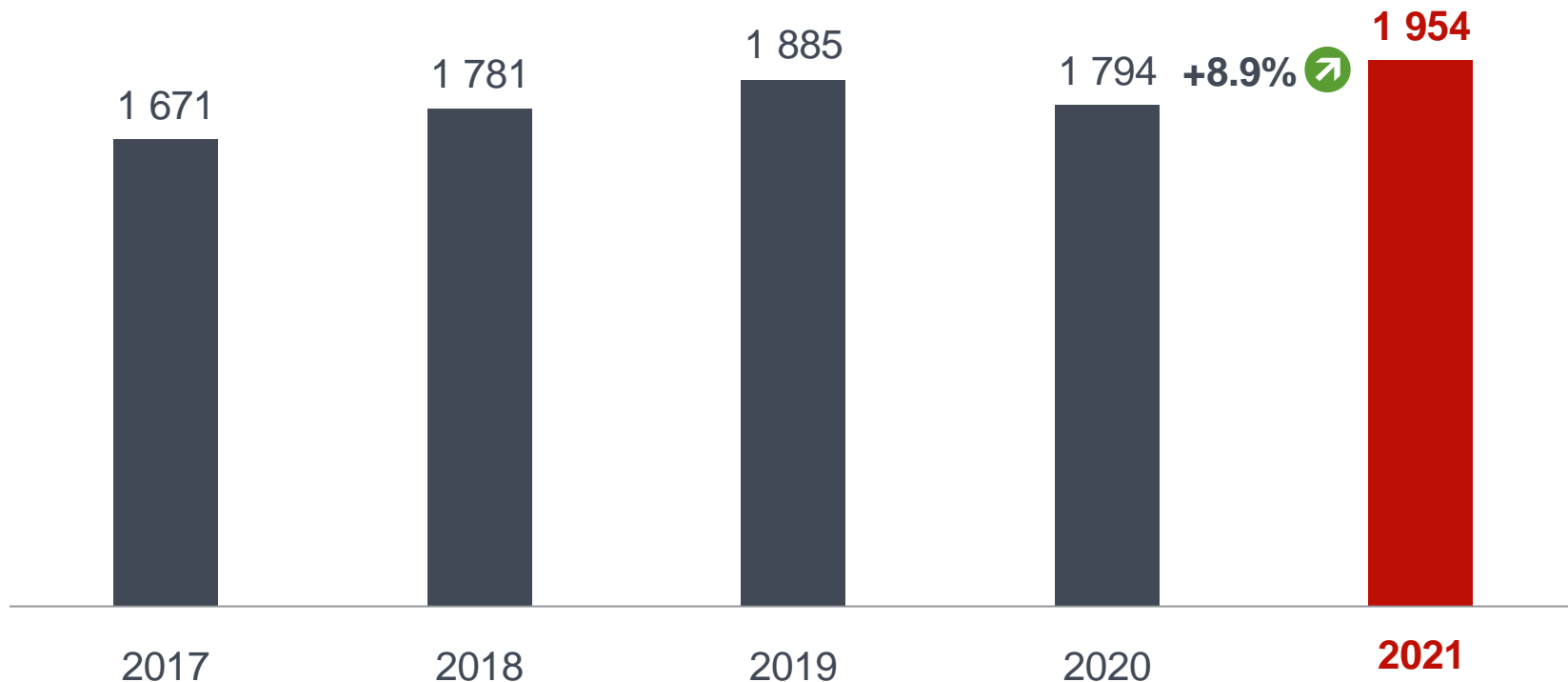
	2021	Change
15 Finland	2 111	11.2%
16 Canada	2 083	18.4%
17 Spain	1 954	8.9%
18 Israel	1 717	2.0%
19 Chinese Taipei	1 472	7.7%
20 Australia	1 019	5.5%
21 Ireland	956	-2.4%
22 India	817	16.5%
23 Turkey	732	21.0%
24 Singapore	711	17.1%
25 Norway	640	-1.8%
26 Poland	539	12.8%
27 Liechtenstein	494	12.5%
28 Luxembourg	430	7.0%

	2021	Change
29 Saudi Arabia	377	-23.7%
30 Cayman Islands	295	-34.9%
31 Barbados	293	13.6%
32 Portugal	286	13.9%
33 Russian Federation	272	1.1%
34 New Zealand	226	15.3%
35 Czech Republic	203	-1.5%
36 Greece	198	46.7%
37 Brazil	181	13.1%
38 Hong Kong SAR (China)	180	18.4%
39 Hungary	118	8.3%
40 Slovenia	116	-29.7%

Source: EPO. Status: 24.01.2022.

¹ European patent applications include direct European applications and international (PCT) applications that entered the European phase during the reporting period.
The geographic origin is based on the first-named applicant principle.

European patent applications¹ – Spain



Source: EPO. Status: 24.01.2022.

¹ European patent applications include direct European applications and international (PCT) applications that entered the European phase during the reporting period.
The geographic origin is based on the first-named applicant principle.

Leading fields of technology¹ – global

TOP 10

		2021	Change	
1	Digital communication	15 400	9.4%	↗
2	Medical technology	15 321	0.8%	↗
3	Computer technology	14 671	9.7%	↗
4	Electrical machinery, apparatus, energy	12 054	5.7%	↗
5	Transport	9 399	4.5%	↗
6	Measurement	9 167	6.5%	↗
7	Pharmaceuticals	9 026	6.9%	↗
8	Biotechnology	7 611	6.6%	↗
9	Other special machines	6 450	3.8%	↗
10	Organic fine chemistry	5 923	-1.8%	↘

Source: EPO. Status: 24.01.2022.

¹ The definition of the fields is based on the WIPO IPC technology concordance. The table is available at:
http://www.wipo.int/export/sites/www/ipstats/en/statistics/patents/xls/ipc_technology.xls

Leading 15 fields of technology¹ – Spain²

TOP 15

	2021	Change	
1 Pharmaceuticals	189	7.4%	↗
2 Electrical machinery, apparatus, energy	165	22.2%	↗
3 Medical technology	147	17.6%	↗
4 Biotechnology	141	24.8%	↗
5 Transport	117	15.8%	↗
6 Engines, pumps, turbines	110	77.4%	↗
7 Organic fine chemistry	85	-15.0%	↘
8 Other special machines	72	14.3%	↗
9 Handling	70	-9.1%	↘
10 Civil engineering	66	-18.5%	↘
11 Measurement	63	-4.5%	↘
12 Computer technology	61	19.6%	↗
13 Basic materials chemistry	58	0.0%	→
13 Furniture, games	58	23.4%	↗
15 Materials, metallurgy	43	4.9%	↗

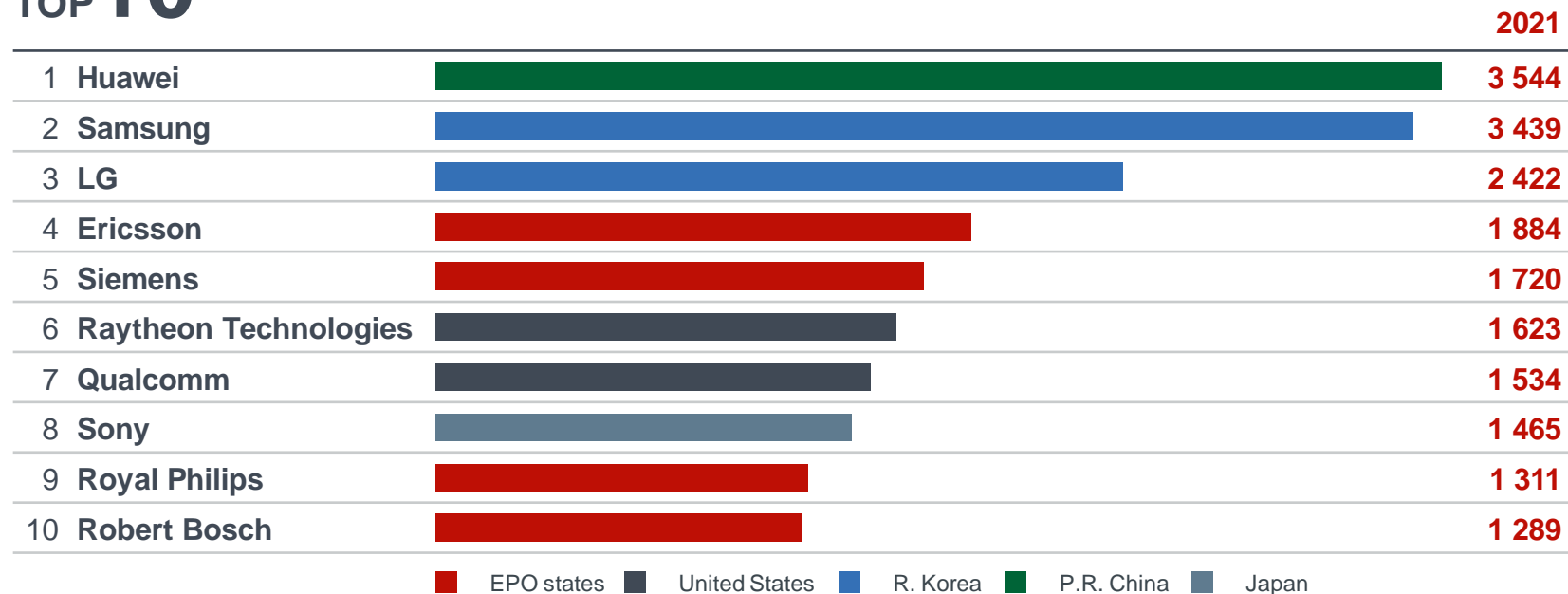
Source: EPO. Status: 24.01.2022.

¹ The definition of the fields is based on the WIPO IPC technology concordance. The table is available at: http://www.wipo.int/export/sites/www/ipstats/en/statistics/patents/xls/ipc_technology.xls

² The geographic origin is based on the first-named applicant principle.

Top EPO applicants¹ 2021 – global

TOP 10



Source: EPO. Status: 24.01.2022.

¹ This is the ranking of the main consolidated applicants at the EPO in 2021 (first-named applicant principle). It is based on European patent applications filed with the EPO, which include direct European applications and international (PCT) applications that entered the European phase during the reporting period. Applications by identifiable subsidiaries, not necessarily located in the same country, are allocated to the consolidated applicants. The countries refer to the country of residence of the headquarters.

Top EPO applicants 2021 – global

TOP50

	2021		2021		2021
1 Huawei	3 544	18 Intel	843	35 CEA ³	528
2 Samsung	3 439	19 Panasonic	781	36 Unilever	524
3 LG	2 422	20 Hitachi	774	37 ABB	522
4 Ericsson	1 884	21 Siemens Energy	748	38 Boeing	520
5 Siemens	1 720	22 ZTE	719	39 Fujifilm	512
6 Raytheon Technologies	1 623	23 Baidu	691	40 Dow Chemical	503
7 Qualcomm	1 534	24 Signify	641	41 Valeo	500
8 Sony	1 465	25 Medtronic	640	42 Japan Tobacco International	495
9 Royal Philips	1 311	26 Roche	633	43 Apple	491
10 Robert Bosch	1 289	27 Honeywell	601	44 Volvo	466
11 BASF	1 284	28 Xiaomi	598	45 HP	463
12 Microsoft	1 211	29 3M	591	46 NTT Docomo	461
13 Oppo ¹	1 057	30 Airbus	585	47 Interdigital	460
14 Nokia	1 038	31 Canon	565	48 Volkswagen	459
15 Alphabet	1 023	32 Fraunhofer-Gesellschaft ²	564	49 Tencent	439
16 General Electric	871	33 Mitsubishi Electric	540	50 Bayer	437
17 Johnson & Johnson	861	33 Safran	540	50 Continental	437

Source: EPO. Status: 24.01.2022.

¹ Guangdong OPPO Mobile Telecommunications. ² Fraunhofer-Gesellschaft zur Förderung der angewandten Forschung e.V.

³ Commissariat à l'énergie atomique et aux énergies alternatives.

Top applicants at the EPO in 2021 from Spain¹

1	CONSEJO SUPERIOR DE INVESTIGACIONES CIENTÍFICAS (CSIC)	85
2	AMADEUS	33
3	AUTOTECH ENGINEERING	22
4	FUNDACION TECNALIA RESEARCH & INNOVATION	20
5	UNIVERSIDAD AUTÓNOMA DE BARCELONA	14
5	UNIVERSITAT POLITÈCNICA DE CATALUNYA	14
7	DALPHI METAL ESPAÑA	13
7	CENTRO NACIONAL DE INVESTIGACIONES ONCOLÓGICAS CARLOS III	13
7	SOLTEC INNOVATIONS	13
10	UNIVERSITAT POLITÈCNICA DE VALÈNCIA	12

Source: EPO. Status: 24.01.2022.

¹ This is the ranking of the main consolidated applicants at the EPO in 2021 (first-named applicant principle). It is based on European patent applications filed with the EPO, which include direct European applications and international (PCT) applications that entered the European phase during the reporting period. Applications by identifiable subsidiaries, not necessarily located in the same country, are allocated to the consolidated applicants. The countries refer to the country of residence of the headquarters.

European patent applications¹ 2021 – regional breakdown – Spain

Region	Autonomous Com. Province	2021	Share	Change
East	Catalonia	653	33.5%	16.8% ↗
	Valencia	164	8.4%	5.8% ↗
	Balearic Islands	9	0.5%	-35.7% ↘
Madrid	Madrid	381	19.5%	0.8% ↗
Northeast	Basque Country	223	11.4%	4.7% ↗
	Aragon	99	5.1%	3.1% ↗
	Navarre	97	5.0%	-2.0% ↘
	La Rioja	8	0.4%	0.0% →
South	Andalusia	98	5.0%	11.4% ↗
	Murcia	46	2.4%	100.0% ↗
	Ceuta	0	0.0%	– →
	Melilla	0	0.0%	-100.0% ↘
Northwest	Galicia	75	3.8%	47.1% ↗
	Asturias	25	1.3%	19.0% ↗
	Cantabria	6	0.3%	-14.3% ↘
Centre	Castille and Leon	40	2.0%	11.1% ↗
	Castilla-La Mancha	12	0.6%	-29.4% ↘
	Extremadura	4	0.2%	300.0% ↗
Canary Islands	Canary Islands	12	0.6%	-45.5% ↘

Source: EPO. Status: 24.01.2022.

¹ European patent applications include direct European applications and international (PCT) applications that entered the European phase during the reporting period.

The geographic origin is based on the first-named applicant principle.

European patent applications¹ 2021 – regional breakdown – Spain

Region		2021	Share	Change	
East	<div></div>	826	42.3%	13.5%	↗
Northeast	<div></div>	427	21.9%	2.6%	↗
Madrid	<div></div>	381	19.5%	0.8%	↗
South	<div></div>	144	7.4%	28.6%	↗
Northwest	<div></div>	106	5.4%	34.2%	↗
Centre	<div></div>	56	2.9%	3.7%	↗
Canary Islands	<div></div>	12	0.6%	-45.5%	↘
Metropolitan area					
Barcelona	<div></div>	385	19.7%	7.5%	↗
Madrid	<div></div>	371	19.0%	3.1%	↗

Source: EPO. Status: 24.01.2022.

¹ European patent applications include direct European applications and international (PCT) applications that entered the European phase during the reporting period.
The geographic origin is based on the first-named applicant principle.